

back to
BASIC

Sege



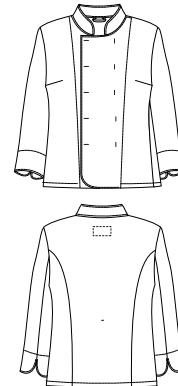
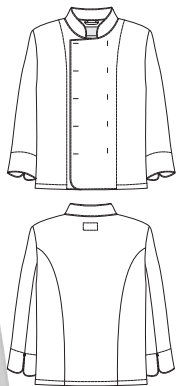
Good taste
doesn't have
to cost

CHEF'S JACKET / STUD BUTTONS

Also available in 100 sizes.

Men's *Women's*

NEW!



1603 - CHEF'S JACKET, C44-64, (+ WHITE C146-154)



Straight cut with seams at the back. Removable stud buttons included. Button colour same as stud colour. Hanging loop in the collar. Sizes C146-154 are approx 5 cm longer in the arms and length (mid back).

Qual 201: 65/35% polyester/cotton, Twill. Wash 85°C.

Colours: 000 white, 015 black



1608 - CHEF'S JACKET, WOMEN'S, C34-50



Classic cut, with bust darts, slightly waisted. Removable stud buttons included. Button colour same as stud colour. Seams at the back. Hanging loop in the collar.

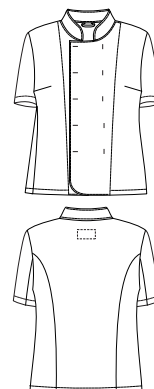
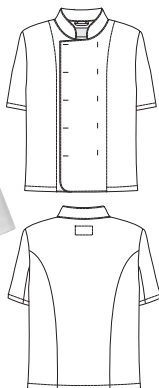
Qual 201: 65/35% polyester/cotton, Twill. Wash 85°C.

Colours: 000 white, 015 black



Men's *Women's*

NEW!



1601 - CHEF'S JACKET, C44-64



Straight cut with seams at the back. Removable stud buttons included. Button colour same as stud colour. Hook in the collar.

Qual 201: 65/35% polyester/cotton, Twill. Wash 85°C.

Colours: 000 white, 015 black



1606 - CHEF'S JACKET WOMEN'S, C34-50



Classic cut, with bust darts, slightly waisted. Removable stud buttons included. Button colour same as stud colour. Seams at the back. Hanging loop in the collar.

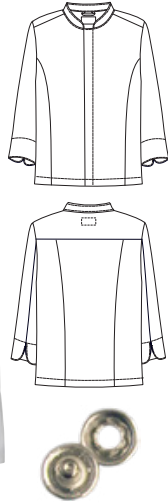
Qual 201: 65/35% polyester/cotton, Twill. Wash 85°C.

Colours: 000 white, 015 black



CHEF'S JACKET / SNAP BUTTONS

Men's *Women's*



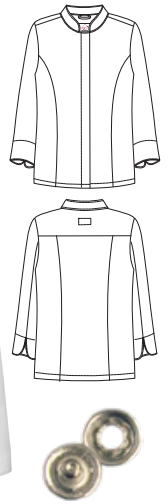
1057 - CHEF'S SHIRT, C44-64



Slim fit. Concealed closure with snap buttons. Yoke, longitudinal seams front/back. Hanging loop in the collar.

Qual 201: 65/35% polyester/cotton, Twill. Wash 85°C.

Colours: 000 white, 015 black



1058 - CHEF'S SHIRT, WOMEN'S, C34-50



Slim fit. Concealed closure with snap buttons. Yoke, longitudinal seams front/back. Hanging loop in the collar.

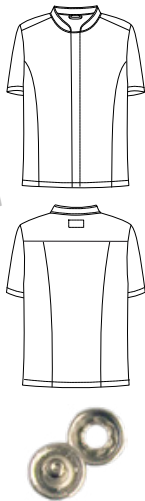
Qual 201: 65/35% polyester/cotton, Twill. Wash 85°C.

Colours: 000 white, 015 black



Also available in 100 sizes.

Men's *Women's*



1053 - CHEF'S SHIRT, C44-64, (+ WHITE C146-154)

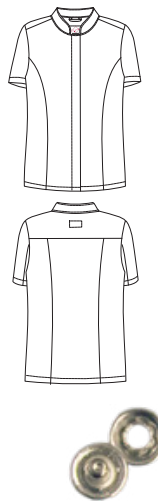


Slim fit. Concealed closure with snap buttons. Yoke, longitudinal seams front/back. Hanging loop in the collar.

Sizes C146-154 are approx 5 cm longer in the arms and length (mid back).

Qual 201: 65/35% polyester/cotton, Twill. Wash 85°C.

Colours: 000 white, 015 black



1056 - CHEF'S SHIRT WOMEN'S, C34-50



Slim fit. Concealed closure with snap buttons. Yoke, longitudinal seams front/back. Hanging loop in the collar.

Qual 201: 65/35% polyester/cotton, Twill. Wash 85°C.

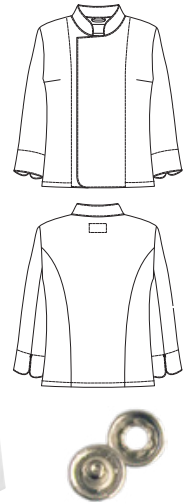
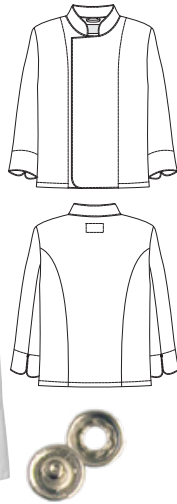
Colours: 000 white, 015 black



CHEF'S JACKET / SNAP BUTTONS

Men's *Women's*

Now also in C34.



1607 - CHEF'S JACKET, C44-64



Straight cut with seams at the back. Concealed closure with snap buttons. Hanging loop in the collar.

Qual 201: 65/35% polyester/cotton, Twill. Wash 85°C.

Colours: 000 white, 015 black



1604 - CHEF'S JACKET WOMEN'S, C34-50



Classic cut, with bust darts, slightly waisted. Hidden closure with snap buttons. Seams at the back. Hanging loop in the collar.

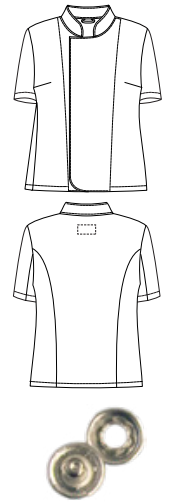
Qual 201: 65/35% polyester/cotton, Twill. Wash 85°C.

Colours: 000 white, 015 black



Men's *Women's*

NEW!



1605 - CHEF'S JACKET, C44-64



Straight cut with seams at the back. Concealed closure with snap buttons. Hanging loop in the collar.

Qual 201: 65/35% polyester/cotton, Twill. Wash 85°C.

Colours: 000 white, 015 black



1602 - CHEF'S JACKET WOMEN'S, C34-50



Classic cut, with bust darts, slightly waisted. Concealed closure with snap buttons. Seams at the back. Hanging loop in the collar.

Qual 201: 65/35% polyester/cotton, Twill. Wash 85°C.

Colours: 000 white, 015 black



NEW COLOURS!



1706 622/201- HAT S/M, L/XL



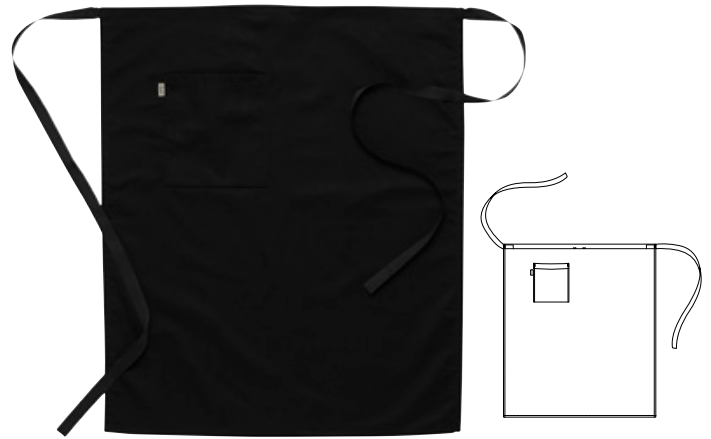
S/M (approx 54-58 cm), L/XL (approx 59-63 cm). Elasticated back.

Qual 622: 100% cotton. Wash 85°C.

Colours: 000 white

Qual 201: 65/35% polyester/cotton, Twill Wash 85°C.

Colours: 002 navy, 015 black



5987 - WAIST APRON, APPROX 75 X 85 CM



Pocket on right side with bellows pleat, key holder. Loop for hanging. Polyester herringbone belt.

Qual 280: 65/35% polyester/cotton, Twill Wash 85°C.

Colours: 000 white, 002 navy, 015 black



Men's

Women's



8619 201 - TROUSERS MEN'S, C44-60, C146-154

8618 201 - TROUSERS WOMEN'S, C34-48



Slightly slimmer fit and leg width. Full waistband with belt loops. Side pockets. Braided back pocket.

Qual 201: 65/35% polyester/cotton, Twill. Wash 85°C.

Colours: 015 black



5986 - BIB APRON, APPROX 75 X 95 CM



Adjustable fabric neck strap. Pocket on right side with bellows pleat, key holder. Loop for hanging. Polyester herringbone belt at waist.

Qual 280: 65/35% polyester/cotton, Twill. Wash 85°C.

Colours: 000 white, 002 navy, 015 black



SIZES AND DIMENSIONS

The dimensions in the table below are **body measurements**. The dimensions are taken wearing underwear. The movement width is included in each model. Varies by model.

WOMEN'S C40 SERIES / S M L SERIES

	XS		S		M		L		XL		XXL	
	C32	C34	C36	C38	C40	C42	C44	C46	C48	C50	C52	C54
Chest measurement	76	80	84	88	92	96	100	104	110	116	122	128
Waist	60	64	68	72	76	80	84	88	94	100	106	112
Hips	84	88	92	96	100	104	108	112	117	122	127	132
Inseam length, trousers*	75	76	77	78	78	79	79	79	80	80	80	81

For Segers **+**range, there is an additional +8 cm at the hips for each size.

MEN'S C50 SERIES / S M L SERIES

	S		M		L		XL		XXL			
	C44	C46	C48	C50	C52	C54	C56	C58	C60	C62		C64
Bust/chest	88	92	96	100	104	108	112	116	120	126	132	138
Waist	76	80	84	88	92	96	100	104	108	114	120	126
Hips	95	99	103	107	111	115	119	123	127	133	139	145
Collar size*	37-38		39-40		41-42		43-44		45-46		47-48	
Inseam length, trousers*	77	78	79	80	81	82	83	83	84	84	85	85

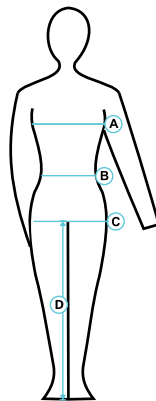
For the C150 SERIES, +6 cm is added for the inseam leg for each size.

D100 RANGE has -4 cm taken from the inseam leg for each size.

CHANGING FROM UNISEX/MEN TO WOMEN'S (S M L range)

Size	XS	S	M	L	XL	XXL
Corresponds to Men's	C40-42	C44-46	C48-50	C52-54	C56-58	C60-62
Corresponds to Women's	C34-36	C38-40	C42-44	C46-48	C50	C52-54

*garment measurements, not body measurements



- A = Chest measurement: taken over the highest point
 - B = Waist
 - C = Hips: taken over the widest point. Approximately 20 cm below the waist.
 - D = Inseam length, garment dimensions.
- Start from the hips size when sizing trousers.
- Start from the chest measurement when sizing top parts.



- HIGH C

Most bacteria only die in 72°C heat and above, yet most work clothing only tolerates a 40-60°C wash. Most of Segers clothing can be washed at 85°C without compromising on quality or lifespan. A safer garment for a healthier work environment.



- Our new items are marked with this symbol.



- Our improved articles are marked with this symbol.



SEGERS FABRIKER AB

Företagsgatan 30, 504 64 BORÅS
+46 33-23 10 00 • www.segers.com
order@segers.com • info@segers.com